



# Advancing Racial Equity Through Impact Investing

2018 UUA General Assembly  
Kansas City, MO



[uua.org](http://uua.org)



# Impact Investing

Impact investments are investments made into companies, organizations, and funds with the intention to generate social and environmental impact alongside a financial return.

(Global Impact Investing Network)



# Social Entrepreneurship & Impact Investing



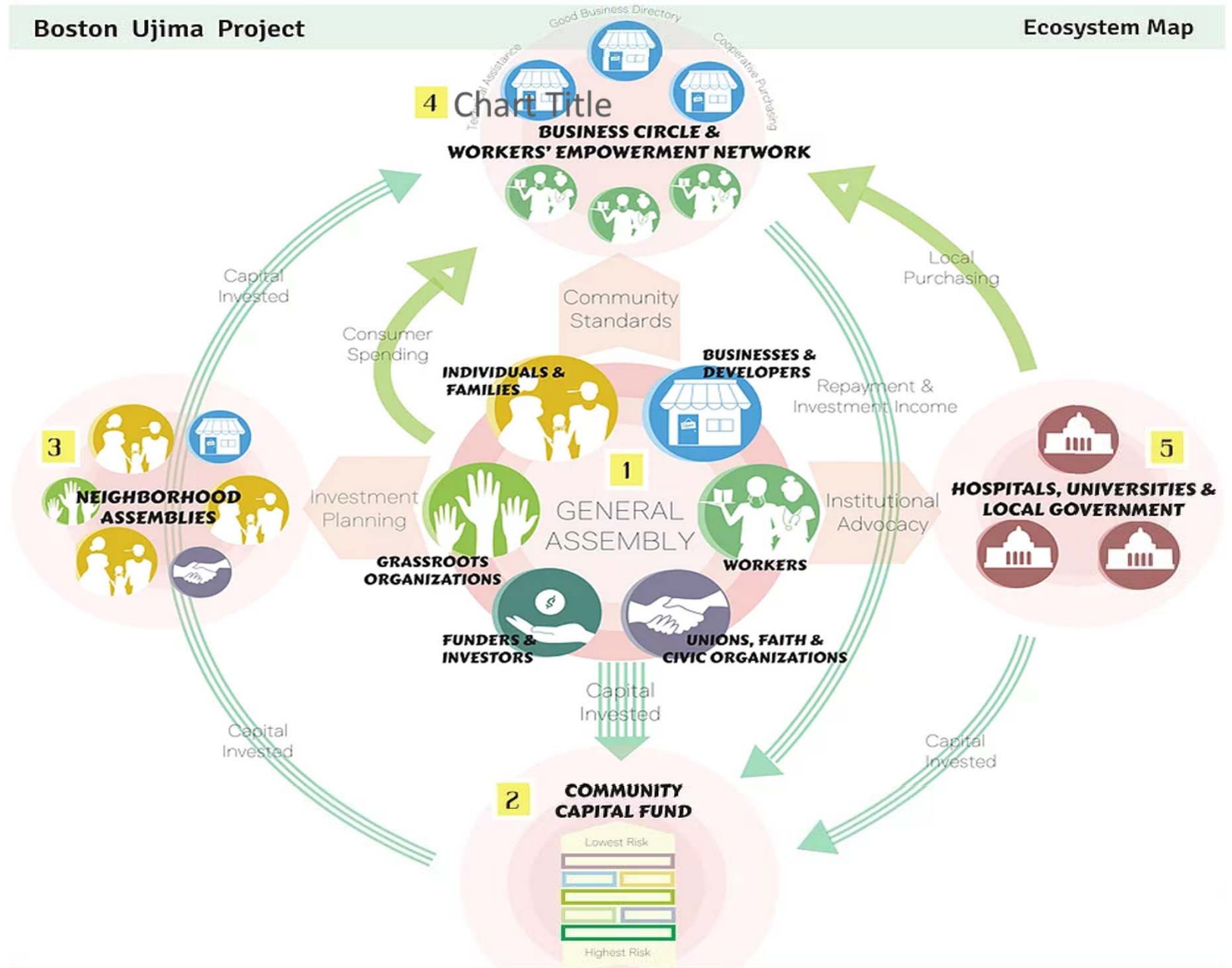
[uua.org](http://uua.org)



# UJIMA ECOSYSTEM MAP

Boston Ujima Project

Ecosystem Map



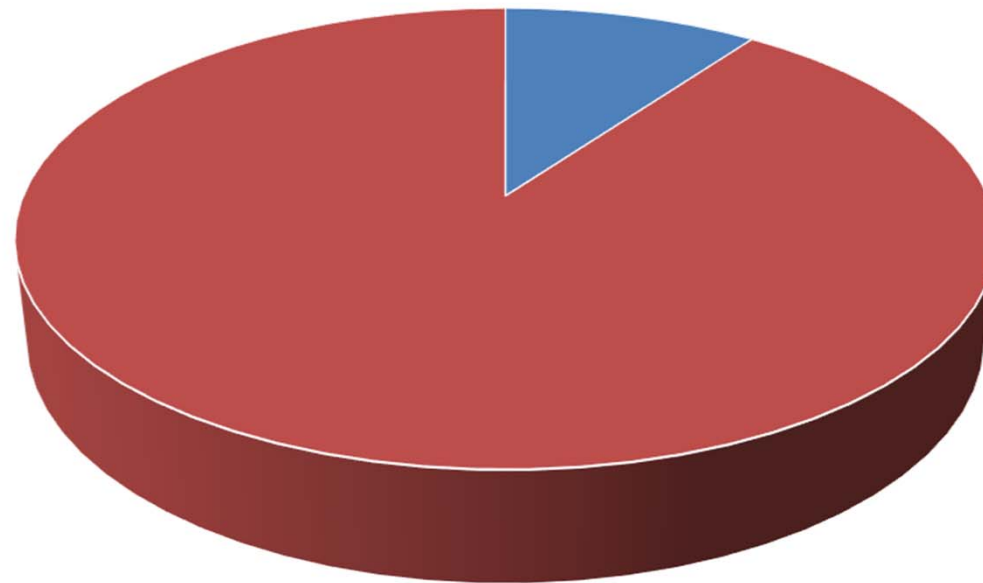


# Less than 10% of all venture capital deals go to women, people of color, and LGBT founders

Arlan Hamilton (Backstage Capital)



VC Investment



■ PoC, Women, LGBTQ ■ ■ ■



# Wealth Inequality and the Fallacies of Impact Investing

The traditional sources of impact capital—foundations and accredited investors seeking to “do well by doing good”—expect positive financial and social returns without regard for *how* their wealth has been created, multiplied, and contributes to growing income and wealth inequality. Two hundred fifty years of slavery, ninety years of Jim Crow, sixty years of separate but equal, and thirty-five years of racist housing policy have led to investment criteria and practices that inherently exclude and price out entrepreneurs and communities impact investors hope to support.



Rodney D. Foxworth, Exec. Director BALLE  
(Medium February 2018)



## QUESTIONS:

How might faith communities use financial assets and resources to drive racial equity through impact investing?

How might congregations bring a racial equity lens to social impact investing in their communities?