

THE YOUTH AND EMERGING ADULT MINISTRY (YEAM) TEAM



Shannon (she/her)

Co-Director of LFE



Nico (they/them)

BIPOC Youth and Emerging Adults
MAR Liason



Ember (she/her)

YEA Leadership
CER Liason



Mylo (they/them)

YEA Safety and Inclusion
PWR Liason



Jennica (she/her)

Community Development
NER Liason



Eric (he/him)

Emerging Adults
SR Liaison

THE CHALLENGE AND CHANGE OF THE MOMENT

- Even before COVID, trends in Youth work in religious settings were changing- the old ways were not sustainable and didn't lead to lifetime development.
- COVID wiped out what was left of the old expectations and structures of UU Youth Work
- The world is feeling a little challenging at the moment for nearly all of us.
- LFE has moved to supporting lay leaders and religious educators in community development within and between congregations

A QUESTION FOR YOU

Share in the chat-

What does youth ministry/youth work mean to you?

or

Tell us in the chat about a time when you felt a sense of agency and belonging in a UU space.



RELEASING OUR EXPECTATIONS



“Matter doesn't disappear, it transforms. Energy is the same way. The Earth is layer upon layer of all that has existed, remembered by the dirt.”

-adrienne maree brown

We can honor the past and “the way it has always been done”, but I believe in this historical moment of breakdown, we are confronted with possibility in a whole new way. Can we meet our Youth where they are? Can we embrace change? Can we release expectations and transform to meet the moment?

COLLABORATIVE COMMUNAL LEADERSHIP

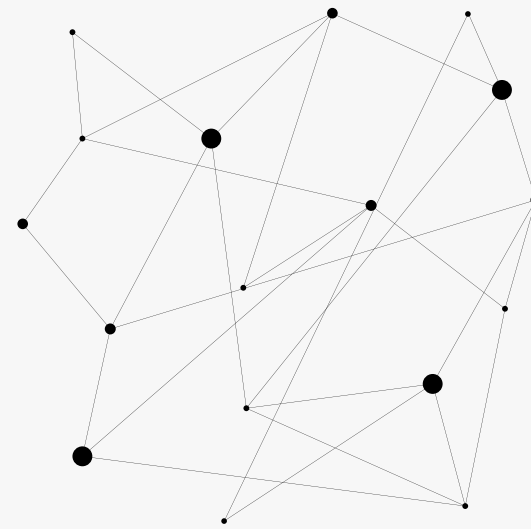
We believe . . .

Youth who feel that they are integral, contributing members of their congregations will develop into adults who will seek the same.

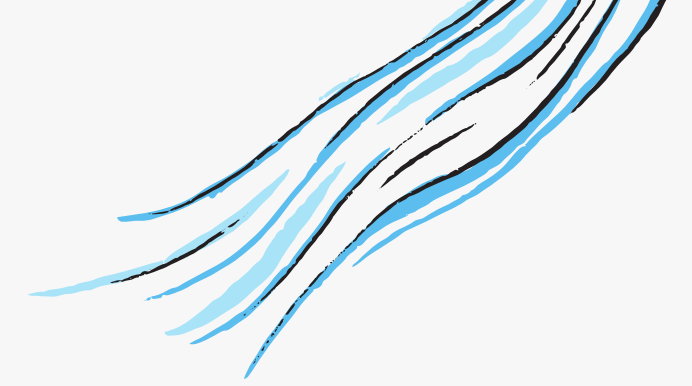
Ministry to and with Youth is not solely the responsibility of YEAM or Religious Education Professionals, the entire association must work collaboratively to affirm and support our young people.

Youth need safe spaces to explore and celebrate who they are becoming, where they experience belonging, and where they can practice living our values; this is where leaders come from.

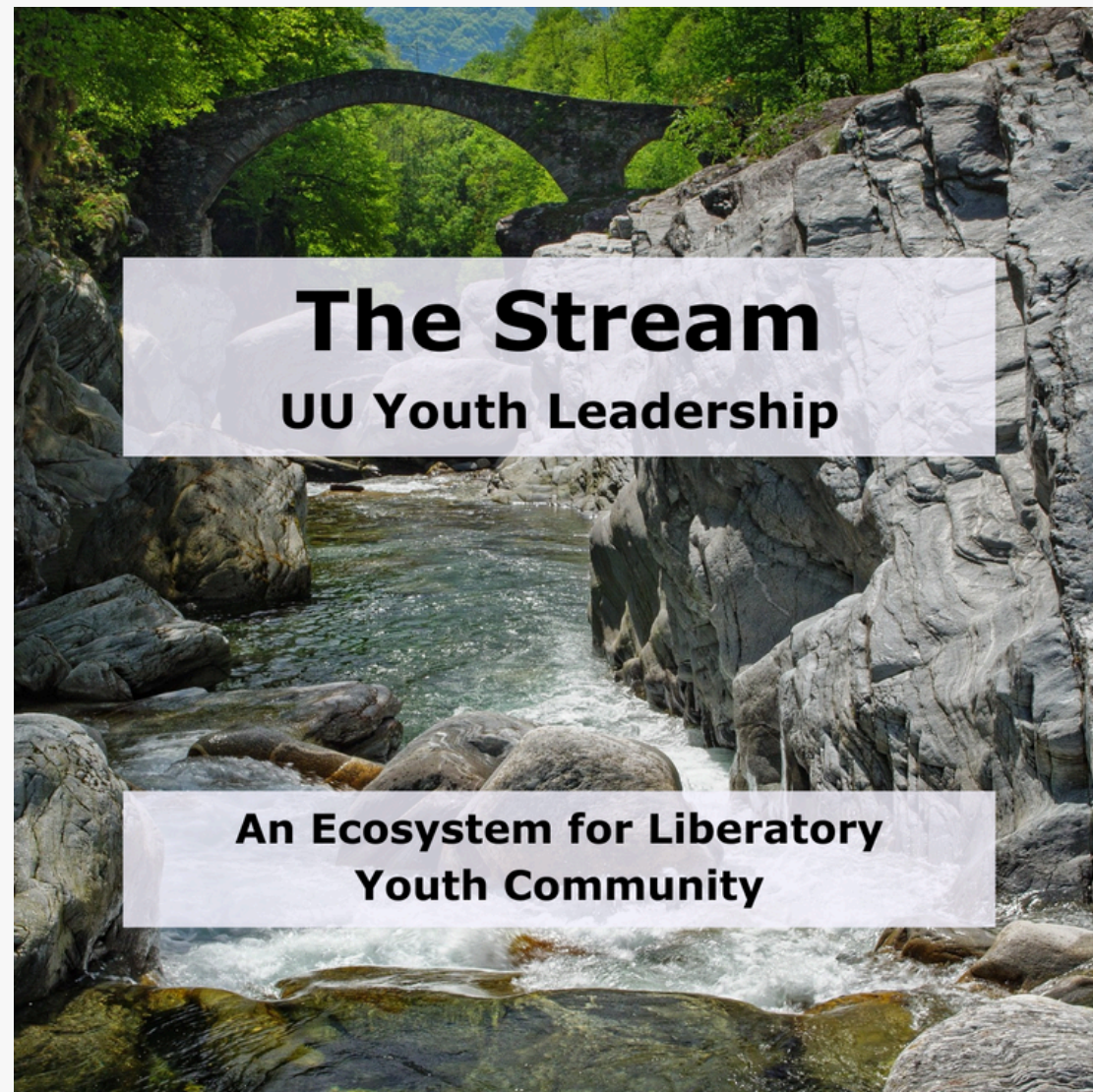
Leadership can take many forms, some we may not have even dreamed of yet. We have to be open to doing things differently if we are going to encourage young people to lead.



THE STREAM



What is it?



The Tributaries of the Stream

Youth Community Building

Youth and Multigenerational Worship

General Assembly and other Association offerings as opportunities for Youth Leadership Practice and Education



“Small is good, small is all. (The Large is a reflection of the small)”
-adrienne maree brown

Coming from ground up, congregational level, and collaborative- not top down “plucking” of youth leaders. Provide opportunity to all!

Deeper Joy RPG Is first element rolling out

THRIVE CONNECTIONS

Thrive Connections (working title) is part of the Thrive program, which is Lifespan Faith Engagement Office of the UUA's efforts to resource and connect youth and emerging adults (YEAs, ages 14-24) of color within Unitarian Universalism.

The goal of the program is twofold: to facilitate and support meaningful relationship building between young BIPOC UUs and adult BIPOC UUs, and to offer young people an experience of BIPOC-centered community that can serve as a guide and reference point as they navigate other relationships and communities.

The program seeks to offer resources and support to multigenerational pairs/groups that are grounded in BIPOC UU ways of being together.

(Piloting begins at GA in partnership with DRUMM)

ADDITIONAL YEAM PROGRAMS

Supporting Faith Development

DEEPER JOY

Whole Community
Engagement with
Young People at the
Center



NEAT

National Emerging
Adult Taskforce
Connecting 18-25
year olds



THRIVE

Programs and
Resources for BIPoC
Youth and Young
Adults



GA YEA

Supporting YEA
Engagement and
Community Care at
General Assembly

